



Developing a Salt & Potash Business

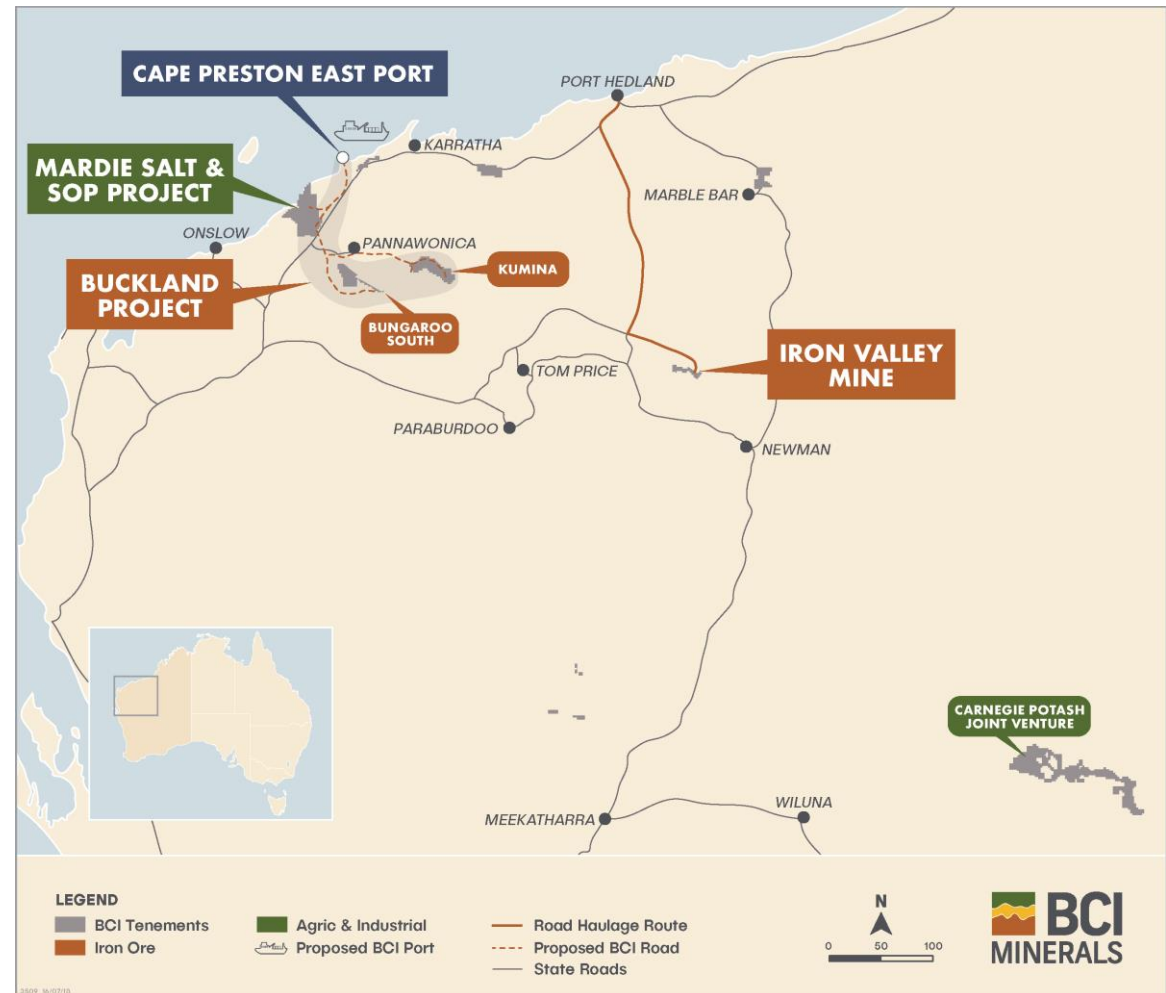
Corporate Presentation

For personal use only

About BCI Minerals



- ASX-listed resources company based in Perth, Australia (ASX: BCI)
- Market cap of ~A\$55M (at A\$0.14)
- A\$13.1M¹ cash and zero debt
- Building a new **Salt** and **Potash** business supported by **Iron Ore** earnings:
 - Feasibility study being undertaken on the **Mardie Salt & SOP Project**
 - Royalty earnings from the 6-8Mtpa **Iron Valley Mine**
 - Current divestment process to generate cash & royalties from all iron ore assets

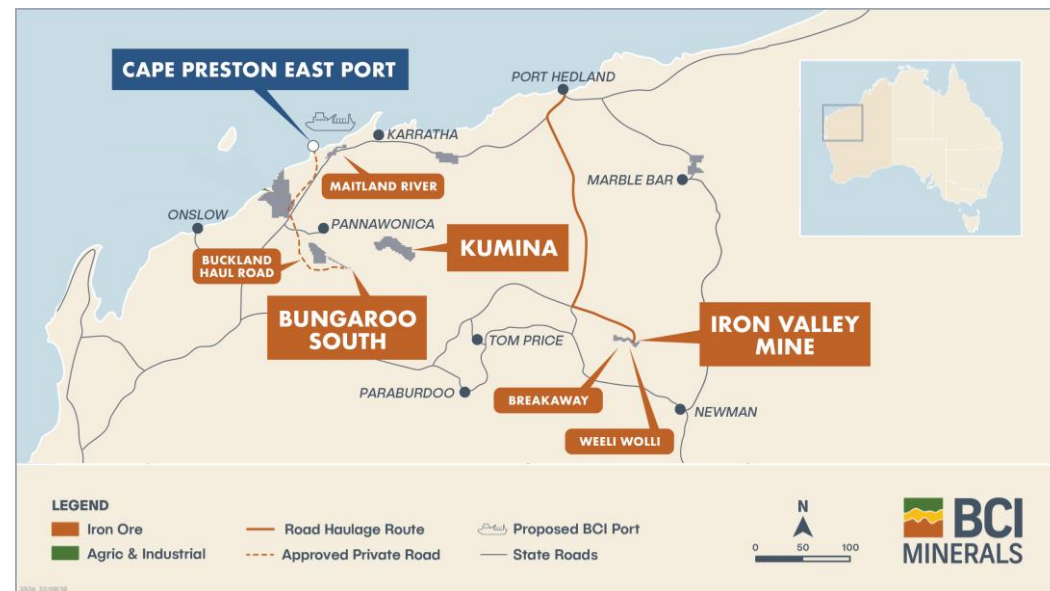


For personal use only

Iron Ore Divestment Process

For personal use only

- Divestment process underway for the potential sale of BCI's iron ore asset portfolio
 - **Iron Valley:** 6-8Mtpa operating mine delivering royalty income (~A\$8M in FY18 and ~A\$16M in FY17)
 - **Kumina:** Resource of 115Mt at 58.0% Fe² with significant upside potential
 - **Bungaroo South:** Resource of 283Mt at 56.5% Fe¹; FS completed for an 8Mtpa operation
 - **Cape Preston East Port:** designs, lease agreement and approvals for a 20Mtpa transshipment port
 - **Other:** Maitland River, a >1Bt magnetite resource¹, and other exploration tenements
- Cash proceeds and any future royalties will enable BCI to fund and maintain a 100% interest in Mardie through to FID



Deposit	JORC Resource (Mt)	Fe %
Iron Valley ¹	230	58.4
Bungaroo South and Satellites ¹	283	56.5
Kumina ²	115	58.0
Total Hematite	628	57.5

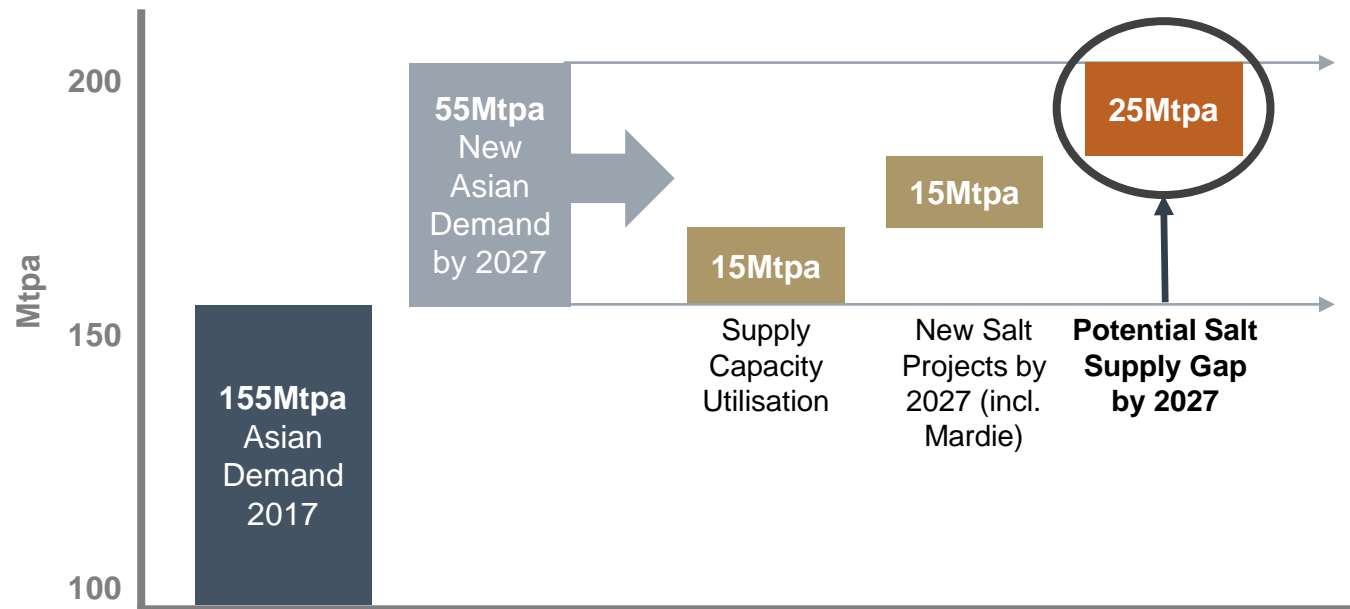
Why Salt and SOP?

Both Salt and SOP have an attractive long term demand outlook

For personal use only

Salt (NaCl)

- Strong demand growth forecast in Asian chemical industry
- Supply gap equal to ~7 Mardie sized projects possible by 2027



Sulphate of Potash (K₂SO₄ or SOP)

- Positive demand outlook for SOP based on global population growth, increasing food quality requirement & reduction in arable land
- SOP is better quality fertiliser used on high value crops. >US\$200/t price premium over chlorine containing muriate of potash (MOP)



Australian Salt & SOP Landscape

- Currently five large evaporative **Salt** operations with a total production capacity of ~14Mtpa salt
 - Key players are Dampier Salt (Rio Tinto, Marubeni and Sojitz) and Mitsui
 - Operations up to 5 decades old
- No existing **SOP** production in Australia – existing consumption is entirely imported
- **Mardie Salt & SOP Project** is located on the coast in Australia's key salt production region
- Key barriers to entry include:
 - Large landholding on coast
 - Suitable soil and climate conditions
 - Detailed environmental approvals



Mardie Salt & SOP – Unique Opportunity

For personal use only

- Ideal site for a large-scale solar evaporation project
 - Coastal location with large tenement holding
 - Excellent climate with high net evaporation rates
 - Large area of low permeability mudflats
 - Environmentally sensitive areas can be avoided
 - Favourable surface water flows within tenements
- Potential operational life of >50 years
- Environmental approval pathway and tenure well defined and progressed
- Positive PFS completed in Jun-18¹
- Two product strategy in PFS:
 - 3.5Mtpa high purity salt for use in the chlor-alkali industry
 - 75ktpa high value sulphate of potash (SOP) for use in fertiliser industry



1. Refer to BCI ASX release dated 1 June 2018. All material assumptions and technical parameters underpinning the production target and forecast financial information derived from the production target continue to apply and have not materially changed.

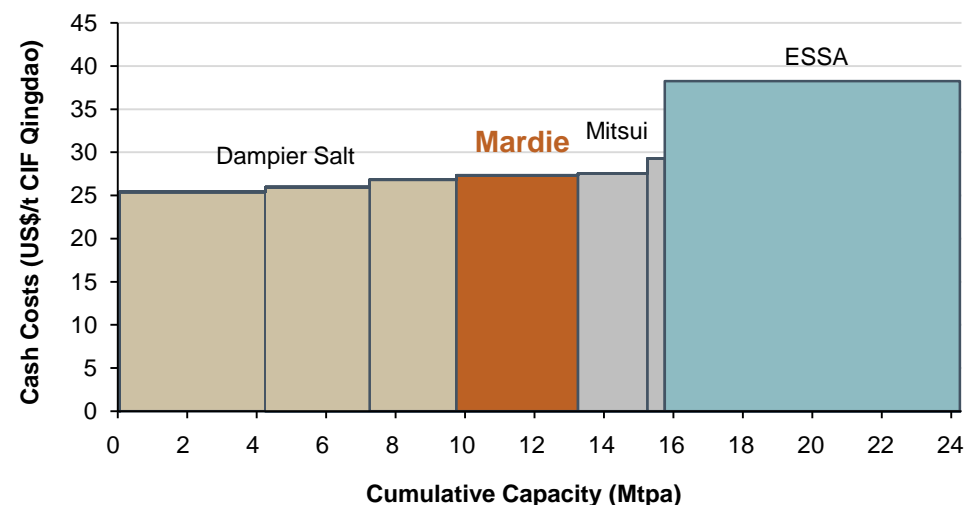
Attractive PFS Economics¹

Key Metrics	Salt	SOP
Production	3.5Mtpa	75ktpa
Operating Life ²	>50 years	>50 years
Capex	A\$248M	A\$87M
Price (FOB)	A\$40/t	A\$667/t
Opex (FOB)	A\$20/t	A\$250/t
EBITDA/t	A\$20/t	A\$417/t

EBITDA pa	A\$102M
Pre-tax NPV ₁₀	A\$335M
Pre-tax IRR	20%
Payback Period	5 years post production

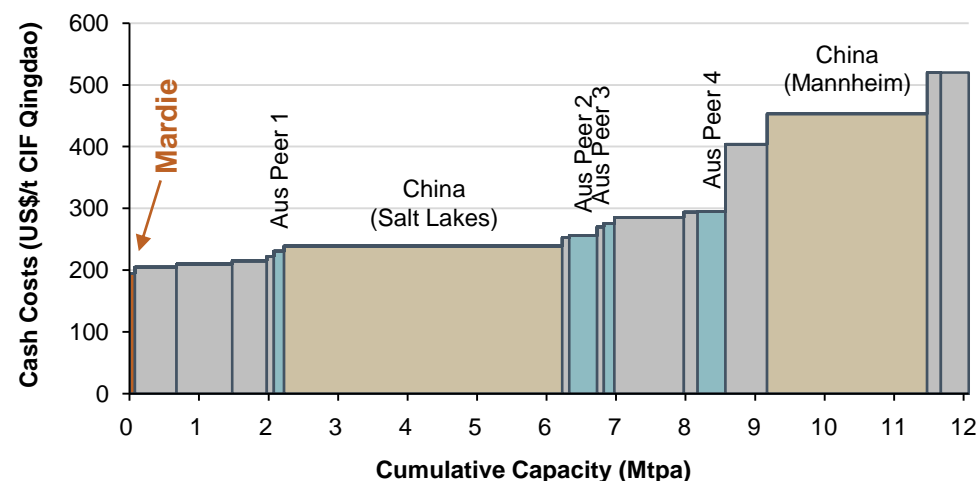
1. Refer to BCI ASX release dated 1 June 2018. All material assumptions and technical parameters underpinning the production target and forecast financial information derived from the production target continue to apply and have not materially changed.
2. NPV and IRR based on a 30 year operation only.

Salt Cost Curve – High Purity Supply into Asia



Source: Roskill, BCI analysis.

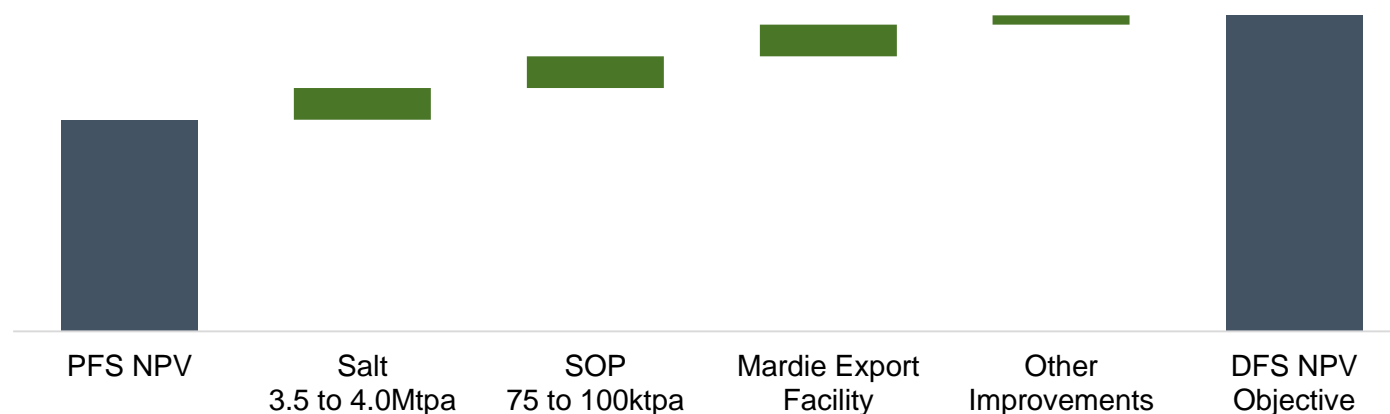
SOP Cost Curve – Global



Source: Integer Research, BCI analysis.

DFS Scope and Objectives

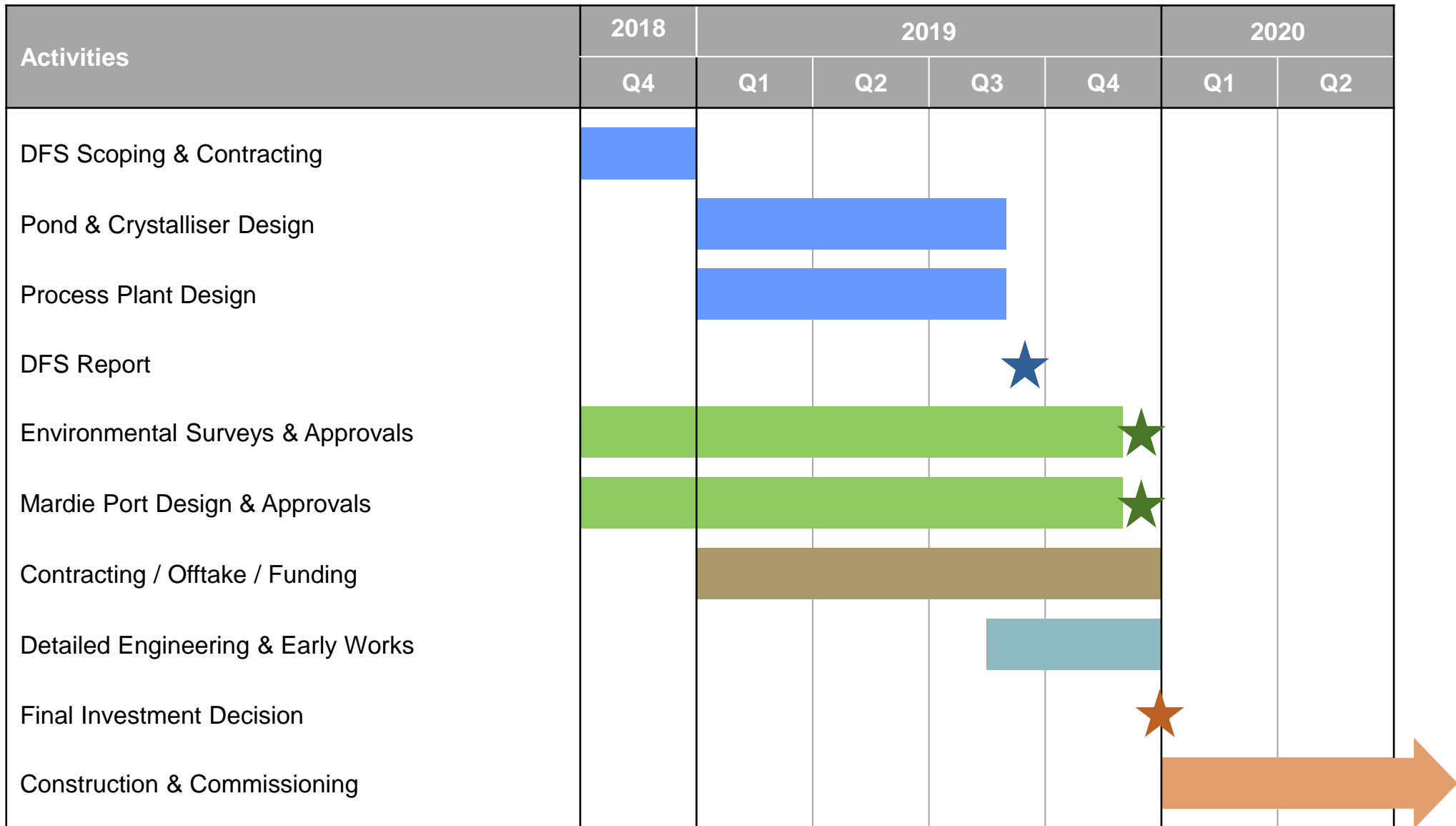
	PFS (Actual, Jun-18)	DFS ¹ (Objectives, Q3-19)
Design Accuracy	-15% to +25% AACE Class 4	-10% to +15% AACE Class 3
Salt Production	3.5Mtpa	4.0Mtpa
SOP Production	75ktpa	100ktpa
Export Facility	Cape Preston East (70km haul)	Mardie (No haulage)
Time to First Salt Production from FID	4 years	3 years
Environmental Approval Status	EPA Consultation & Scoping	EPA and Ministerial Approvals
Additional By-product Potential	Not included	Magnesium and bromine



1. Objectives are aspirational statements for the DFS. These statements are not production targets, which remain as per the PFS announced on 1 June 2018. All material assumptions and technical parameters underpinning the PFS production targets continue to apply and have not materially changed.

Mardie Proposed FID Timeline

For personal use only



Mardie Conclusions

- ✓ Strong market dynamics in target markets for high-purity salt and SOP
- ✓ Ideal site location and conditions for a solar evaporation project
- ✓ Potentially a very long life operation (>50 years) utilising seawater
- ✓ DFS will target >A\$500M NPV and ~A\$140M per annum EBITDA with accelerated development timeline
- ✓ Mardie can become a globally significant salt and potash project

BCI Key Value Drivers



Buckland/Kumina: divest to provide funding for Mardie through to FID

Q4-18



Iron Valley: BCI royalty upside once MIN confirms light rail development

H1-19



Mardie: Final investment decision with DFS, approvals and funding in place

Q4-19

Important Notices



This presentation has been prepared by BCI Minerals Limited ABN 21 120 646 924 ("BCI").

This document contains background information about BCI current at the date of this presentation. The presentation is in summary form, has not been independently verified and does not purport to be all inclusive or complete nor does it contain all the information that a prospective investor may require in evaluating a possible investment in BCI or its assets. Some of the diagrams and pictures in the presentation are artistic representations only and should not be construed as BCI assets or having any meaning for interpretation reasons.

Recipients should conduct their own investigations and perform their own analysis in order to satisfy themselves as to the accuracy and completeness of the information, statements and opinions contained in this presentation.

This presentation is for information purposes only. Neither this presentation nor the information contained in it constitutes an offer, invitation, solicitation or recommendation in relation to the purchase or sale of securities in any jurisdiction. This document is not a prospectus and does not contain all of the information which would be required to be disclosed in a prospectus. This presentation may not be distributed in any jurisdiction except in accordance with the legal requirements applicable in such jurisdiction. Recipients should inform themselves of the restrictions that apply in their own jurisdiction. A failure to do so may result in a violation of securities laws in such jurisdiction.

This presentation does not constitute investment advice and has been prepared without taking into account the recipient's investment objectives, financial circumstances or particular needs and the opinions and recommendations in this presentation are not intended to represent recommendations of particular investments to particular persons. Recipients should seek their own professional, legal, tax, business and/or financial advice when deciding if an investment is appropriate. All securities transactions involve risks, which include (among others) the risk of adverse or unanticipated market, financial or political developments. To the fullest extent permitted by law, BCI and its related bodies corporate, its directors, officers, employees and representatives (including its agents and advisers), disclaim all liability, take no responsibility for any part of this presentation, or for any errors in or omissions from this presentation arising out of negligence or otherwise and do not make any representation or warranty, express or implied, as to the currency, accuracy, reliability or completeness of any information, statements, opinions, estimates, forecasts, conclusions or other representations contained in this presentation. This presentation may include forward-looking statements. These forward-looking statements are not historical facts but rather are based on BCI's current expectations, estimates and assumptions about the industry in which BCI operates, and beliefs and assumptions regarding BCI's future performance. Words such as "anticipates", "expects", "intends", "plans", "believes", "seeks", "estimates", "potential" and similar expressions are intended to identify forward-looking statements. Forward-looking statements are only predictions and are not guaranteed, and they are subject to known and unknown risks, uncertainties and assumptions, some of which are outside the control of BCI. Past performance is not necessarily a guide to future performance and no representation or warranty is made as to the likelihood of achievement or reasonableness of any forward-looking statements or other forecast. Actual values, results or events may be materially different to those expressed or implied in this presentation. Given these uncertainties, recipients are cautioned not to place reliance on forward looking statements. Any forward looking statements in this presentation speak only at the date of issue of this presentation. Subject to any continuing obligations under applicable law and the ASX Listing Rules, BCI does not undertake any obligation to update or revise any information or any of the forward looking statements in this presentation or any changes in events, conditions or circumstances on which any such forward looking statement is based.

For personal use only

Appendix



Corporate Information



For personal use only

Capital Structure

Ordinary Shares	397.6M
Share Price (17-Sep-18)	\$0.135
Market Capitalisation	\$53.7M
Cash (30-Jun-18)	\$13.1M
Debt (30-Jun-18)	Nil

Board and Management

Brian O'Donnell <i>(Non-Exec Chairman)</i>	Alwyn Vorster <i>(Managing Director)</i>
Michael Blakiston <i>(Non-Exec Director)</i>	Simon Hodge <i>(Chief Financial Officer)</i>
Jennifer Bloom <i>(Non-Exec Director)</i>	Michael Klvac <i>(GM Corporate Affairs)</i>
Martin Bryant <i>(Non-Exec Director)</i>	
Andy Haslam <i>(Non-Exec Director)</i>	

Shareholding and Trading

Wroxby Pty Ltd	27.6%
Top 20 Shareholders	~50%
Number of Shareholders	~7,200
Ave Daily Volume (Last 6 Months)	~350,000

Share Price and Volume



Iron Valley Mine – Royalty Earnings

Quarterly earnings for BCI via royalty agreement with Mineral Resources Ltd (MIN)

- Underlying BCI EBITDA of ~A\$8M in FY18 and ~A\$16M in FY17

6-8Mtpa iron ore operation; 50% lump production; potential mine life of ~15 years

Average ore grade: Lump 60% Fe; Fines 58% Fe

Upside for BCI from MIN's Bulk Ore Shuttle System (BOSS)¹

- Lightweight, narrow gauge rail system with fully autonomous
- Lower opex improves financial viability
- Potential construction start in 1H CY19
- Potential to double production rates to 15Mtpa (**higher royalty payment to BCI**)



1. Refer to MIN announcement dated 8-Jun-18, page 9 of MIN's Macquarie Australia Conference Presentation (2-May-18) page 11 of MIN's FY18 Half-Year Results Presentation (8-Feb-18) for further details

Buckland Iron Ore Project

For personal use only

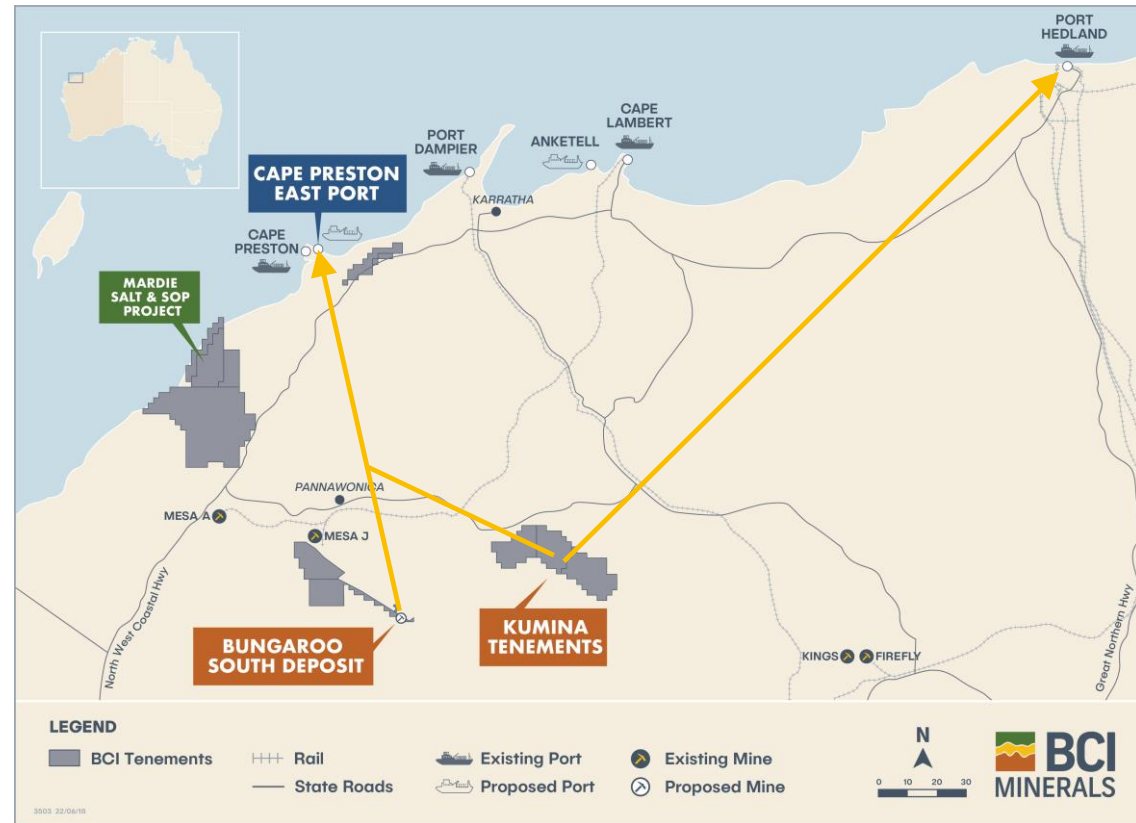
- Development project in the West Pilbara
 - **Bungaroo South:** FS completed and fully approved for 8Mtpa operation¹
 - **Kumina:** maiden Resource of 78Mt at 59.1% Fe (57% Fe cut-off) or 115Mt at 58.0% Fe (53% Fe cut-off)² with upside potential
 - **Cape Preston East Port (CPE):** potential 20Mtpa transshipment port with BCI lease agreement and key approvals in place

Possible development scenarios:

- Bungaroo South and Kumina developed and exported via CPE
- Kumina only developed and exported via CPE or other infrastructure solutions

Focus in FY19:

- Secure transaction(s) to generate value / future earnings



1. Production target released in IOH announcement "Buckland Project Positive Feasibility Study Results" dated 4-Jun-14. All material assumptions underpinning the production target continue to apply and have not materially changed.
2. Refer to BCI announcements dated 28-Jun-18. BCI is not aware of any new information or data that materially affects the information included in the announcement.

For personal use only



T +61 8 6311 3400
E info@bciminerals.com.au
W www.bciminerals.com.au

Level 1, 15
Rheola St West
Perth WA 6005

GPO Box 2811
West Perth WA 6872